

# O-SCP

## OIL-SPILL CONTAINMENT PLATFORM

### Installation Instructions

1

Plan the placement so that natural drainage occurs over the lower edge, this side should **not** be used for vehicle access.

At the same time, plan so that vehicles can easily drive on and off from the opposite short side of the O-SCP. Access is also possible from both long sides.

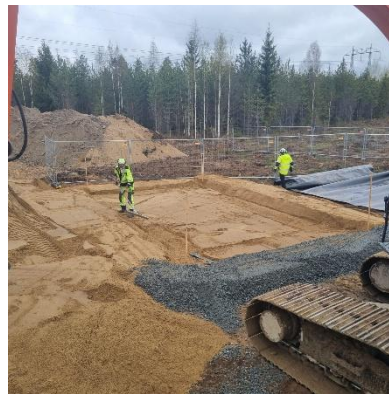


2

Mark the location where the O-SCP will be placed. Use the O-SCP itself as a template.

3

The excavation bottom must be level and approximately 40 cm below the desired ground level, with side slopes of 45 degrees.



**Note:** The entire bottom surface beneath the O-SCP **must** be perfectly horizontal, without any tilt, to ensure proper function.

4

Place the O-SCP with its drainage side facing the “ditch” at the lower edge. Position the O-SCP against a 45-degree edge. The 45-degree fold in the liner should be about **55 cm from the edge** on three sides, and **35 cm from the edge** on the drainage side.



# 5

Backfill along the outside so that 45-degree slopes are formed. The three higher sides should build up about **40 cm**, while the lower drainage side should be about **25 cm** high.



# 6

Add a **20-25 cm thick layer** of gravel (fraction 8-16 mm or 16-32 mm) across the entire surface. The gravel bed should reach the height of the drainage side.



# 7

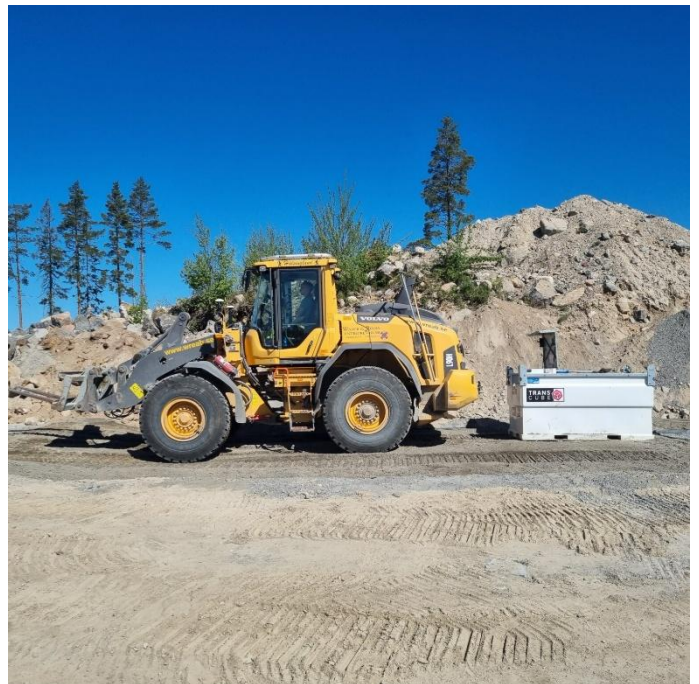
Fill the remaining volume of the O-SCP with a **load-bearing, permeable material**, for example 0-16 mm, 0-32 mm, or similar aggregate and add backfill support on the drainage side as shown in the illustration. The top surface of the O-SCP should now be level with the surrounding ground to allow easy vehicle access without damaging the O-SCP.



# INFORMATION

- When gravel is used in the lower part of the O-SCP, it can contain approximately **2,000-2,500 litres of oil or diesel** without leakage.
- The O-SCP is made of **1.5 mm HDPE oil-resistant plastic**.
- Since the O-SCP separates and discharges clean water, **no roof structure is required**, even under heavy rainfall.
- If oil or diesel contamination is detected, **the affected material must be immediately removed and disposed of**, and replaced with new fill.
- This **Oil-Separation and Containment Platform** is a **Swedish patent approved in 2025**.

# EXAMPLE:



**8 x 5 m**

**12 x 5 m**